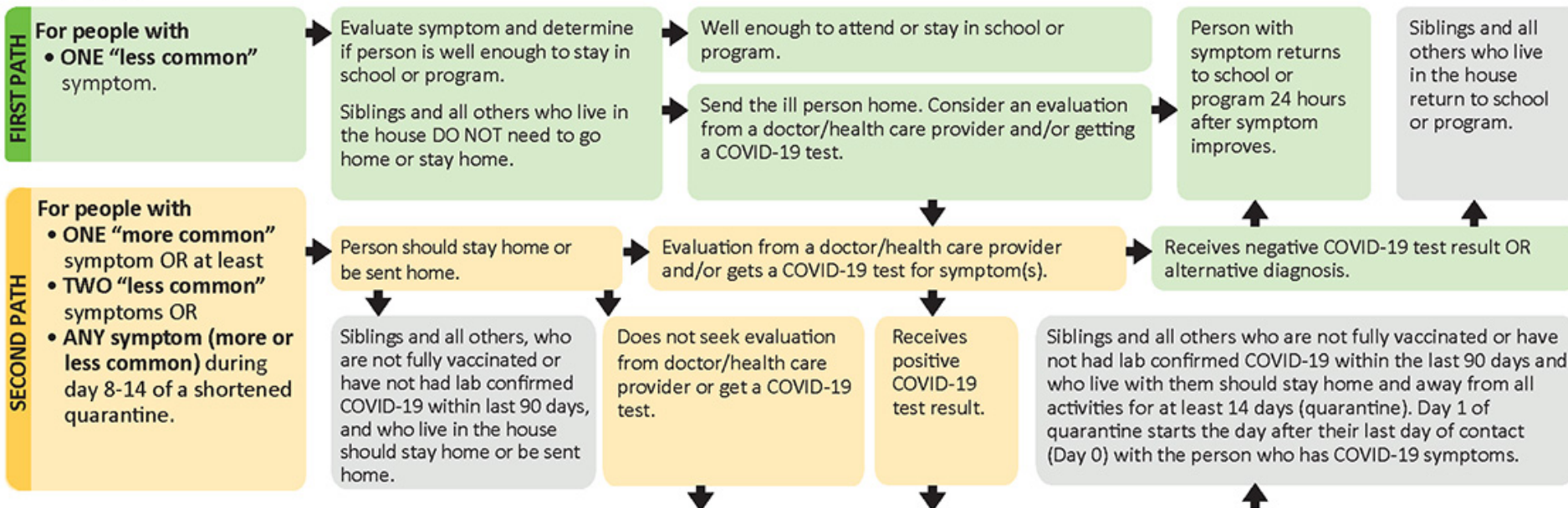


Recommended COVID-19 Decision Tree for People in Schools, Youth, and Child Care Programs

Settings are encouraged to follow the appropriate path if a child, student, or staff person – regardless of vaccination status – is experiencing the following symptoms.

- **More common:** fever of 100.4 degrees Fahrenheit or higher; new cough or a cough that gets worse; difficulty/hard time breathing; new loss of taste or smell.
- **Less common:** sore throat; nausea; vomiting; diarrhea; chills; muscle pain; extreme fatigue/feeling very tired; new severe/very bad headache; new nasal congestion/stuffy or runny nose.



If the person tests positive for COVID-19 and has symptoms they should stay at home and away from others who live in the house (isolation) for at least 10 days from the time the symptoms started and until symptoms have improved and they have had no fever for 24 hours without using fever-reducing medications. If they have no symptoms but test positive, they should stay home for 10 days counting from the day they were tested.

